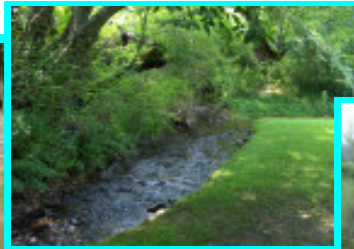


Stream Relocation, Restoration & Wetland Design

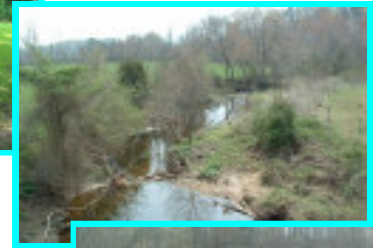
Whether restoring a stream, lake, dam or other water resource structure, **JEWELL Engineering Consultants (JEC)** is a Water Resources Specialist firm experienced in designing an efficient, attractive solution for their clients. With highly skilled, experienced staff using collectively over 50 years experience, Jewell Engineering is well qualified to design and manage water resource projects from beginning to end. **JEC** has been involved with numerous stream, wetland and floodplain projects in North Carolina, South Carolina and Virginia. Project Examples include:

STREAMS & WETLANDS

**CLOMR Study
New Access Drive at
Forsyth Country Club,
Winston-Salem, NC**



**CLOMR study,
Brevard, NC**



**Stream Restoration
& Relocation, No-
Impact, No-Rise
Study, Tributary #2**

to HorsePen Creek, Greensboro, NC

**CLOMR Study
Silar City, NC**



**Wetland Design under Construc-
tion, Reidsville, NC**



**Stream Relocation, Restoration. Stream buffer restora-
tion and design.**



Wetland Design, Wetland Mitigation,



**Hydrologic and hydraulic analysis utilizing Hec-1 and
HEC-RAS programs for channel design and profiles on
streams and rivers.**



**BMP structures and Bio-Retention areas, designs and
certified maintenance inspections.**



**Conditional Letter of Map Revisions
(CLOMR) and Letter of Map Revision
(LOMR) and No-Rise, No-Impact studies
prepared for FEMA.**



P.O. 2294
Kernersville, NC

**Ph (336) 996-9974
Fax (336) 996-9976**